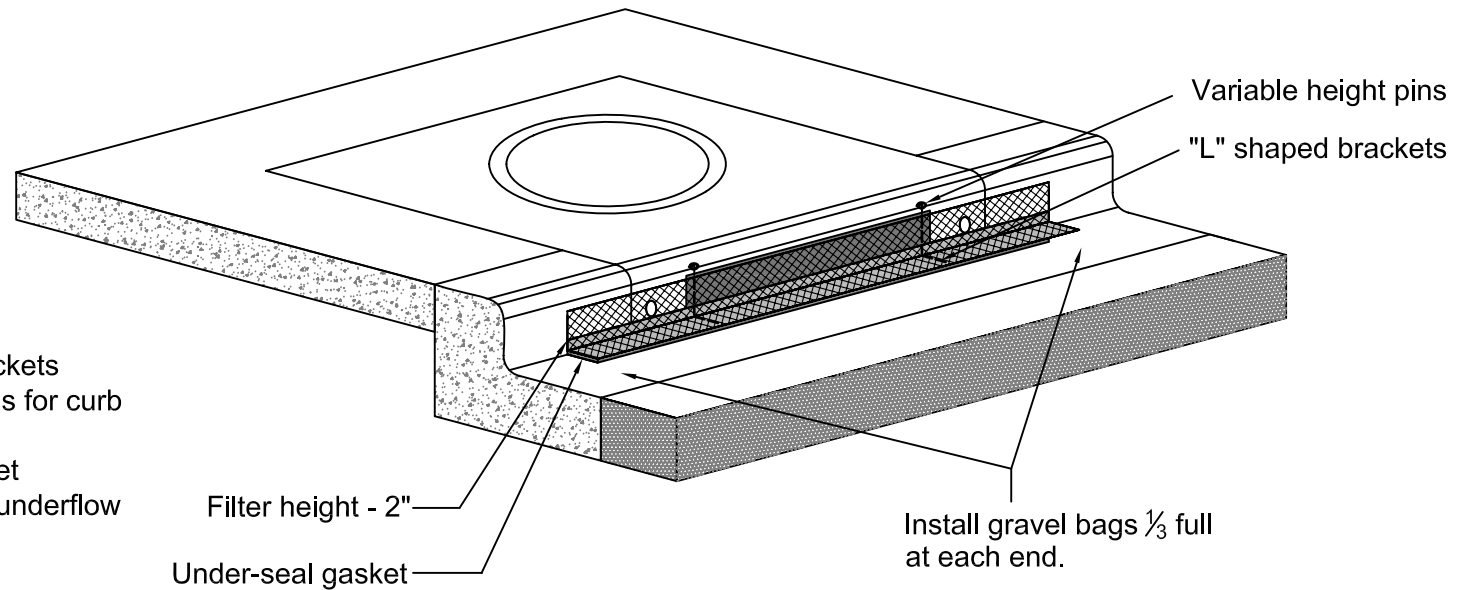


ERTEC[®] Curb Inlet Guard™

Details



Construction Details

- * Minimum 2 integrated "L" Brackets
- * Minimum 2 variable-height pins for curb
- * Filter height = 2 inches
- * UV resistant HDPE outer jacket
- * Under-seal gasket to prevent underflow
- * CIG height = 8 inches
- * CIG length = 6.25 feet

Installation Details

- * **Placement:** place CIG tightly against drain opening with metal variable height pins at top.
- * **Change height for high openings:** extend variable height pins upward if necessary.
- * **Interconnecting for long curb openings:** overlap segments so the bottom gasket provides a continuous seal (one side has a cut-out). Each 6.25" segment fits a 5 foot opening or smaller. Use 2 segments for 8 to 10 feet. Use 3 segments for 15 feet, etc.
- * **Anchoring:** install gravel bags at each end and at overlaps. Use 1/3 full gravel bags for low profile and best traffic avoidance. Use clean gravel at drain inlets - not sand. Select bags with long term UV exposure and toughness for resistance to traffic. Where not possible to install gravel bags due to traffic proximity, it is acceptable to anchor with concrete anchors, or masonry nails - one at each end. Anchor Curb Inlet Guard so that water cannot flow behind it. Use 1" washers.

Inlet Size	# of CIG Segments
5'	1
10'	2
15'	3
20'	4
25'	5
30'	6

Important: All information, including illustrations, is believed to be reliable. Users, however, should independently evaluate the suitability of each project for their application. ERTEC Environmental Systems makes no warranties as to the accuracy of completeness of the information, and disclaims any liability regarding its use. ERTEC Environmental System's only obligations are those in the ERTEC Environmental Systems Standard Terms and Conditions of Sale for this product, and in no case will ERTEC Environmental Systems or its distributors be liable for any incidental indirect or consequential damages arising from the sale, resale, use or misuse of the product. Specifications are subject to change without notice. In addition, ERTEC Environmental Systems reserves the right to make changes, without notification to Buyer, to processing or materials that do not affect compliance with any applicable specification.

** NOT TO SCALE **		U.S. and International Patents Apply © 2009 ERTEC Environmental Systems	
ERTEC Environmental Systems http://www.ertecsystems.com/			File Name: ERTEC - Installation Details - Curb Inlet Guard.dwg
1150 Ballena Blvd. Suite 250 Alameda, CA 94501	P. 866-521-0724 F. 510-521-3972		Layout Name: P1 Details
			Page: 1 of 1