

# ERTEC Environmental Systems

Protecting Global Lands and Waterways™

## Case Study

### S-Fence™

Perimeter Protection



- > Lower Project Costs
- > Better Performance
- > R R R™

- ✓Recycled
- ✓Reusable
- ✓Recyclable



Perimeter & stockpile protection

**Application:** Commercial Construction, Perimeter Sediment Control  
**Product:** ERTEC S-Fence™  
**Customer:** WRL General Contractors — Flint, Texas  
**Projects:** Three New Public Elementary Schools Longview, Texas  
**Project Date:** Spring 2009

S-Fence™ is a perimeter sediment control system, an alternative to silt fence for construction sites which:

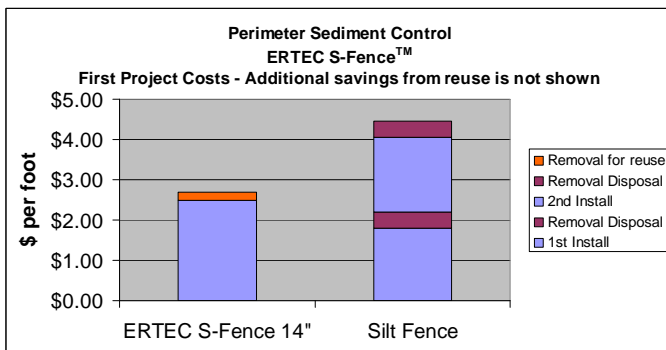
- Significantly reduces off-site sedimentation.
- Typically cuts first project costs by 50%. If reused on following projects, the savings become dramatic.
- Provides significantly better environmental sustainability.

**The Challenge:** WRL received a notice of violation on one of their sites and was looking at the possibility of substantial fines. They were unhappy with placing responsibility for storm water maintenance on already busy superintendents, who tended to put inspections and maintenance on the back burner. Compounding these issues was the fact that responsibility for BMP maintenance changed at different stages during construction. There was no process to transfer responsibility from one sub-contractor to the next. WRL had considerable difficulty getting sub-contractors to take responsibility for their role in storm water management. Dropping the storm water baton led to unforeseen costs that put a strain on the project budget.

The use of silt fence as the primary sediment control BMP exacerbated the problem with continual failures for reasons that are well known (difficulty to install, improper installation, wind knock-downs, storm water washouts, trench failure, sun exposure, vehicle knock-downs, etc). Repair emergencies would often arise without clarity about who to call. WRL knew that if they did not find a solution to this management problem, they would face increased scrutiny from the agencies and the possibility of still more notices of violation, fines, and budget overruns leading to questions of business survival.

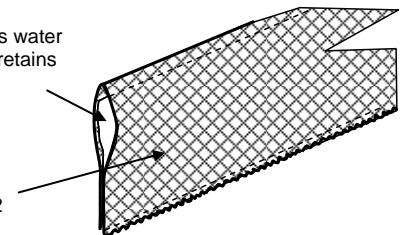
**Solution:** It was determined that the best way to assure solid storm water management was to assign a single company the role of oversight from the planning stage thru landscaping and final stabilization. It was also determined that it was time to stop struggling with silt fence and change the sediment control BMP. The company chose S-Fence™ manufactured by ERTEC®. S-Fence™ was chosen for its low total cost, its sediment control performance, and because it doesn't suffer the same failure modes as silt fence.

**Results:** "By assigning all storm water management to one point-person, and by using ERTEC S-Fence™, we were able to reduce the amount of time and hassle while improving storm water management and compliance. Our overall storm water management savings on this first set of projects was estimated to be around 33%." - Kenny Evans, Project Manager, Evans Environmental—provider of SWPPP services to WRL.



Particle filter allows water flow-through, and retains soil particles

HDPE outer jacket 8,000 openings per yd2



©2009 ERTEC Environmental Systems

1150 Ballena Blvd. Suite 250, Alameda, CA 94501

phone: 510-521-0724, fax: 510-521-3972

sales@ertecsystems.com, www.ertecsystems.com