

# ERTEC Environmental Systems

Protecting Global Lands and Waterways™

## Case Study S-Fence™ Perimeter Protection



- > Lower Project Costs
- > Better Performance
- > R R R™

- ✓ Recycled
- ✓ Reusable
- ✓ Recyclable



### Application:

**Commercial Construction—Perimeter Protection**

### Product:

ERTEC S-Fence™

### Customer:

Barnhart Construction—San Diego, CA

### Projects:

1. University of California, Riverside (2000 ft)
2. Del Norte High School (9000 feet)

### Project Date:

2008 thru 2010 and ongoing

S-Fence™ is a **high performance, low total cost and highly sustainable** system for construction sites which:

- Significantly reduces off-site sedimentation.
- Typically cuts first project costs by 50%. If reused on subsequent projects, the savings are dramatic.
- Provides significantly better environmental sustainability.



### S-Fence™

- Is an important part of a comprehensive BMP system to keep soil in place.
- Allows water flow-through and significantly reduces water velocity while providing particle filtration.



Protection at top and base of slope

**The Challenge:** The current best practice is to use silt fence to keep sediment from moving off-site. Unfortunately, it is not uncommon to see silt fence become ineffective by toppling in the wind, breaking down in UV light or allowing undercutting in areas where it is not trenched properly. Storm water underflow, end-arounds and overtopping is common. Commercial Construction projects often last 18 months or more and it is typical for a large percentage of the silt fence installation to require maintenance or replacement. Additionally, estimators often overlook the cost of silt fence removal and waste handling. Proper installation, removal and disposal is costly. On multi-phase projects, it is also desirable to relocate and reuse the BMP as construction progresses.

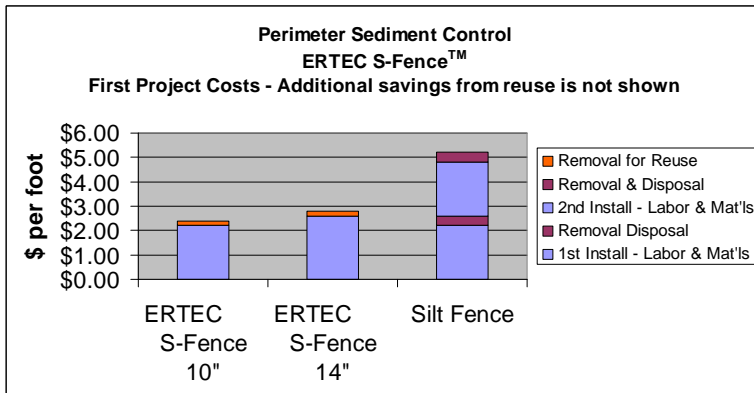


Perimeter & stockpile protection

**Results:** "ERTEC S-Fence™ performed very well on these projects. At the end of the high school project we moved the material to U.C. Riverside. Installation was quick and easy. Because of the long-term endurance of the product and quick installation, the economics were favorable to silt fence on the first project. As our Barnhart's Project Managers reuse the product the savings continue to grow. On each project where we have used ERTEC S-Fence™ there has been very little maintenance. - Mike Alberson, Environmental Management—Heery International, Barnhart, Inc.

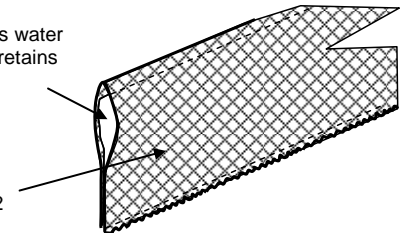


Environmental Management—Heery International, Barnhart, Inc.



Particle filter allows water flow-through, and retains soil particles

HDPE outer jacket 8,000 openings per yd<sup>2</sup>



**©2009 ERTEC Environmental Systems**  
1150 Ballena Blvd. Suite 250, Alameda, CA 94501  
phone: 510-521-0724, fax: 510-521-3972  
sales@ertecsystems.com, www.ertecsystems.com