

ERTEC Environmental Systems

Protecting Global Lands and Waterways™

Case Study S-Fence™ Perimeter Protection



- > Lower Project Costs
- > Better Performance
- > Better than ZERO Waste
 - ✓Recycled
 - ✓Reusable
 - ✓Recyclable



Application:

Commercial Construction—Perimeter Protection

Product:

ERTEC S-Fence™

Customer:

Haselden Construction Denver, CO

Project:

Aspen Valley Hospital, Aspen, CO

Project Date:

2010 and ongoing

S-Fence™ is a **high performing, low total cost and ZERO Waste** system for construction sites which:

- Significantly reduces off-site sedimentation.
- Cuts total project costs by 50%. If reused on subsequent projects, the savings are dramatic.
- Eliminates waste. Unlike silt fence or wattles, nothing goes to landfill.



S-Fence™

- Is an important part of a comprehensive BMP system to keep soil in place.
- Allows water flow-through and significantly reduces water velocity while providing particle filtration.



Stands up to winter conditions

The Challenge: The current best practice is to use silt fence to keep sediment from moving off-site. Unfortunately, it is common to see silt fence toppling in the wind, breaking down in UV light or allowing undercutting in areas where it is not trenched properly. Storm water underflow, end-arounds and overtopping is common. Commercial Construction projects often last 18 months or more and it is typical for a large percentage of the silt fence installation to require maintenance or replacement. Estimators often overlook the cost of silt fence maintenance, removal and waste handling. Proper installation, removal and disposal is costly. On multi-phase projects, it is also desirable to relocate and reuse BMPs as construction progresses. This is not possible with silt fence or wattles.



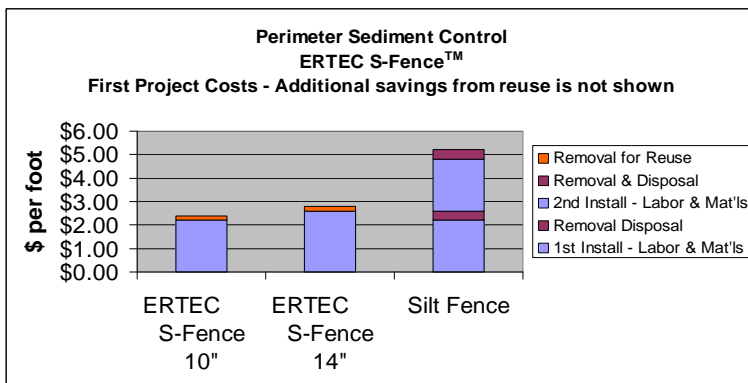
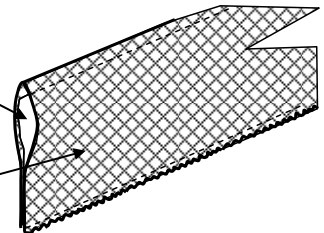
Testimony: "ERTEC S-Fence™ is a refreshing alternative to silt fence. Because of the long-term endurance of the product we will have almost no maintenance. Our total costs for perimeter protection will be a lot less than silt fence."

- Mike Cunningham, Project Mgr — Haselden Construction
 "This site participates in the Colorado Stormwater Excellence Program. The high performing ERTEC material is an important link in the treatment chain that Haselden uses on this job." - Spokesperson—City of Aspen, CO.



Particle filter allows water flow-through, and retains soil particles

HDPE outer jacket 8,000 openings per yd2



©2011 ERTEC Environmental Systems

1150 Ballena Blvd. Suite 250, Alameda, CA 94501

phone: 510-521-0724, fax: 510-521-3972

sales@ertecsystems.com, www.ertecsystems.com